

14 RODBOROUGH ROAD, FRENCHS FOREST










OVERVIEW

14 Rodborough Road is a free-standing 3 level commercial office building located in the Frenchs Forest business precinct, with direct exposure to Warringah Rd.

The established area is set to undergo significant growth over the coming year due to the new Northern Beaches Hospital, set to open in 2018.

HIGHLIGHTS

-  Excellent natural light with great outlook
-  Good exposure to Warringah Road
-  Next to new Northern Beaches Hospital
-  Located in B7 Business Park
-  Secure access
-  On-site parking
-  Fibre optic internet



FITTED & OPEN PLAN OFFICES

The building offers various suite sizes, some of which are already configured in a typical office layout with desks, offices and a board room. Alternatively, occupants may choose to design the suite to accommodate the individual needs of the business.

Office suites typically feature a reception, open plan office space, meeting rooms, kitchens and shared bathroom facilities.

There is a large car park available on-site.

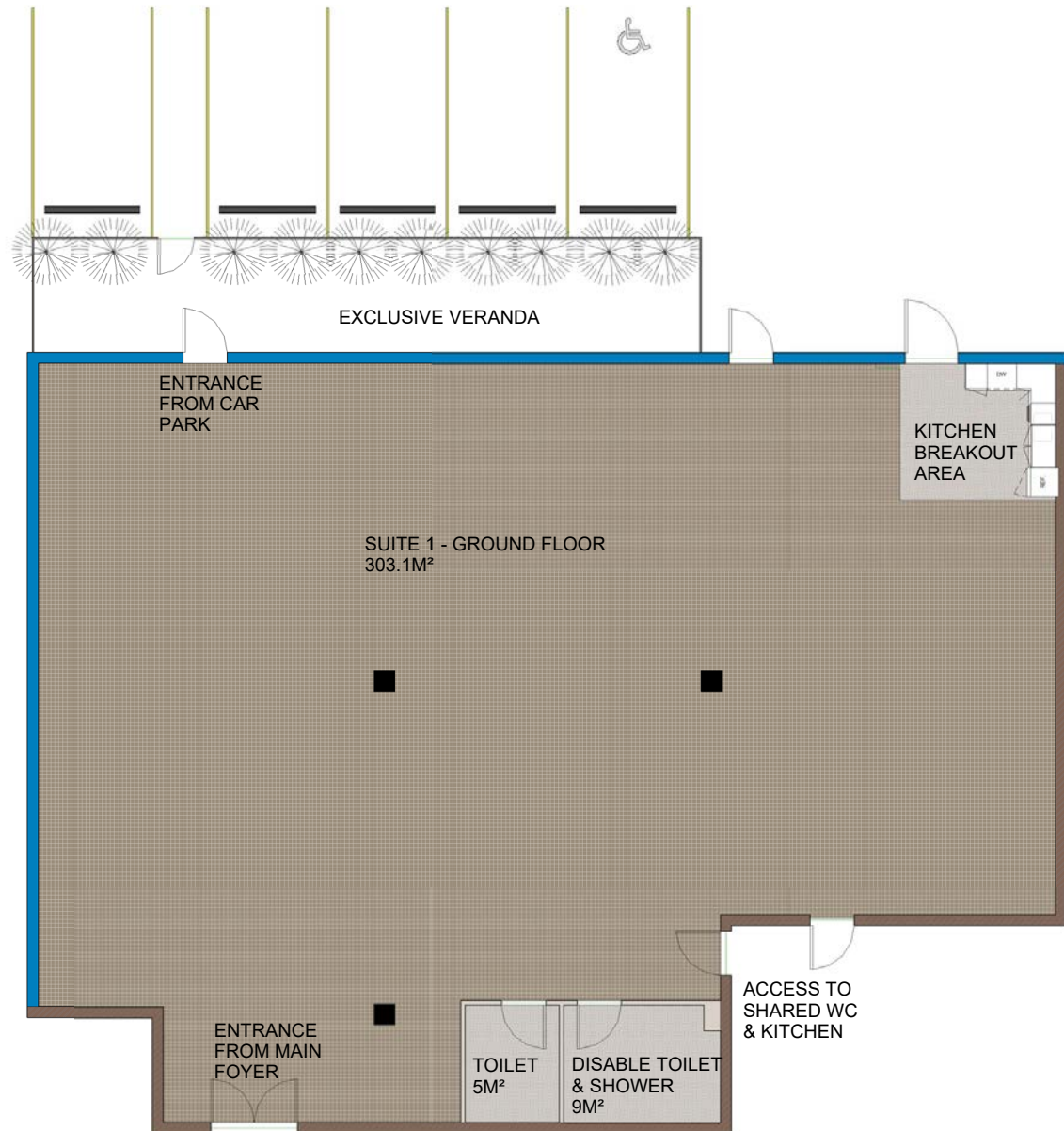


CURRENT AVAILABILITIES

GROUND FLOOR:

SUITE 1

NLA	303.1 sqm
KITCHEN	1
TOILET	1
DISABLE TOILET & SHOWER	1
AVAILABLE	Now

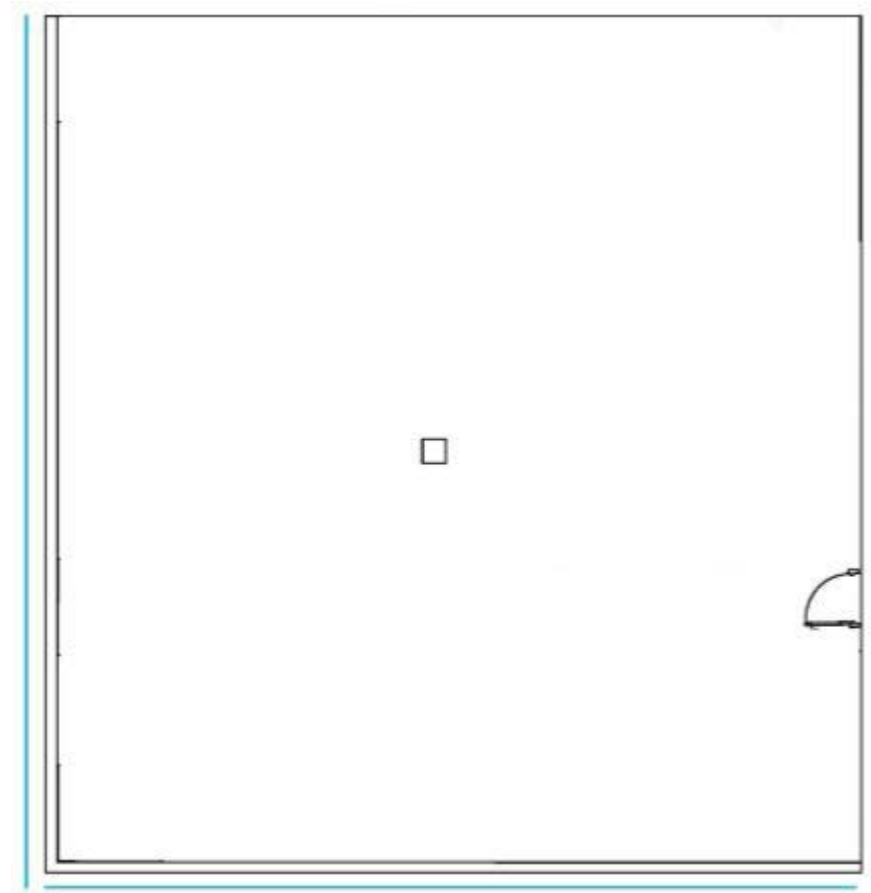


CURRENT AVAILABILITIES

LEVEL ONE:

SUITE 101

NLA	175 sqm
AVAILABLE	Now



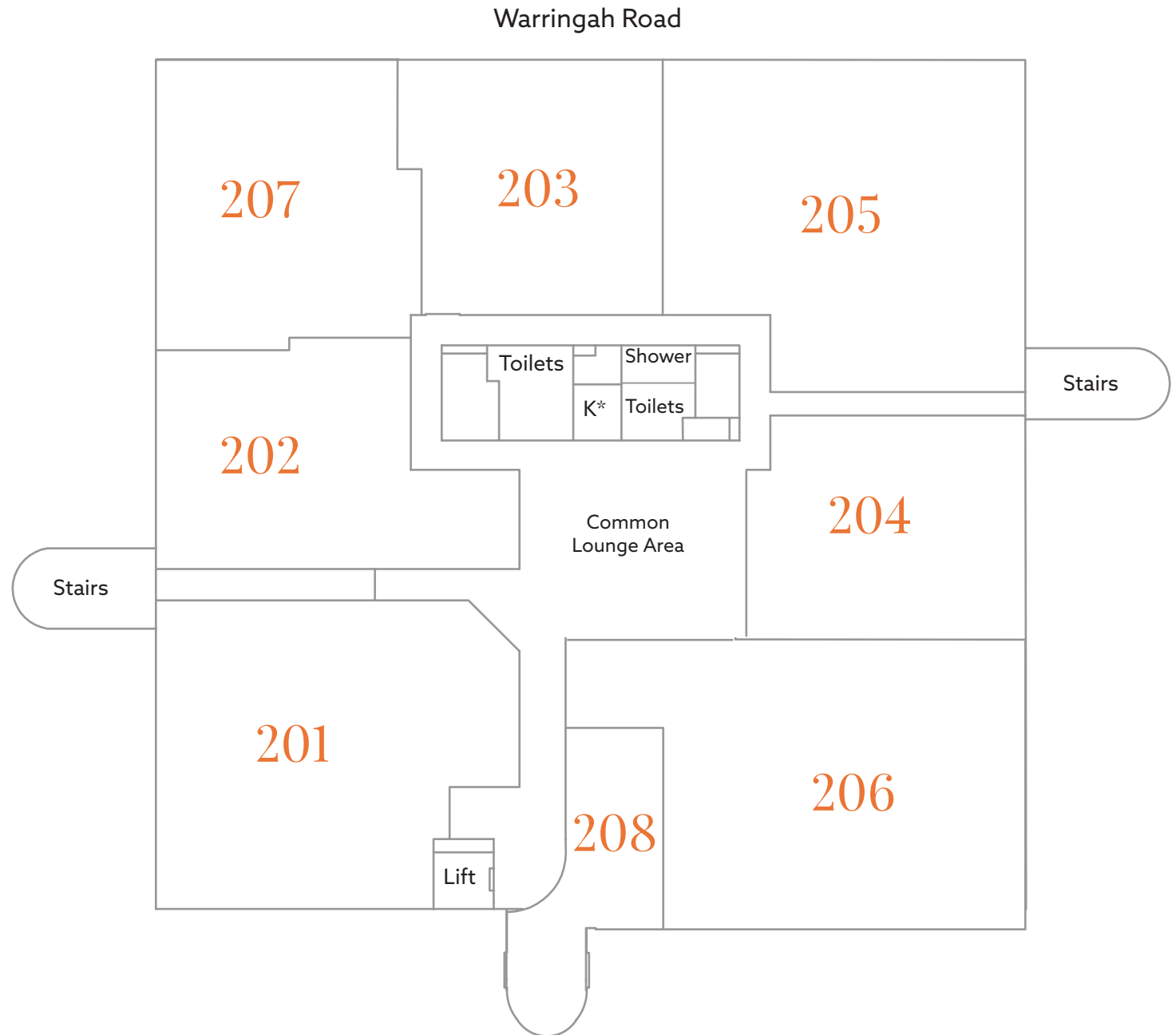
CURRENT AVAILABILITIES

LEVEL TWO

SUITE	NLA
201	269 sqm
202	168 sqm
204	156 sqm
205	270 sqm
206	350 sqm
207	180 sqm

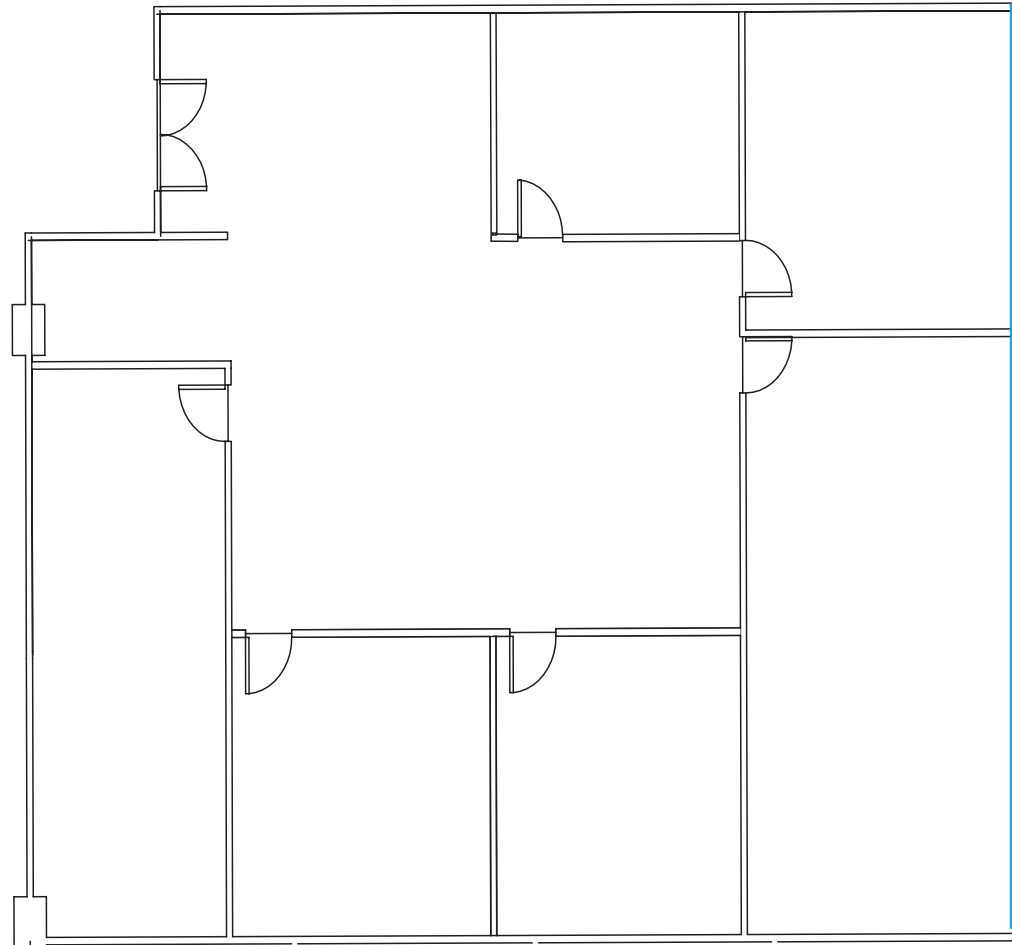
On floor amenities include:

- Kitchen*
- Common Lounge Area
- Shower
- Toilets
- Disabled Toilets
- Lift Access



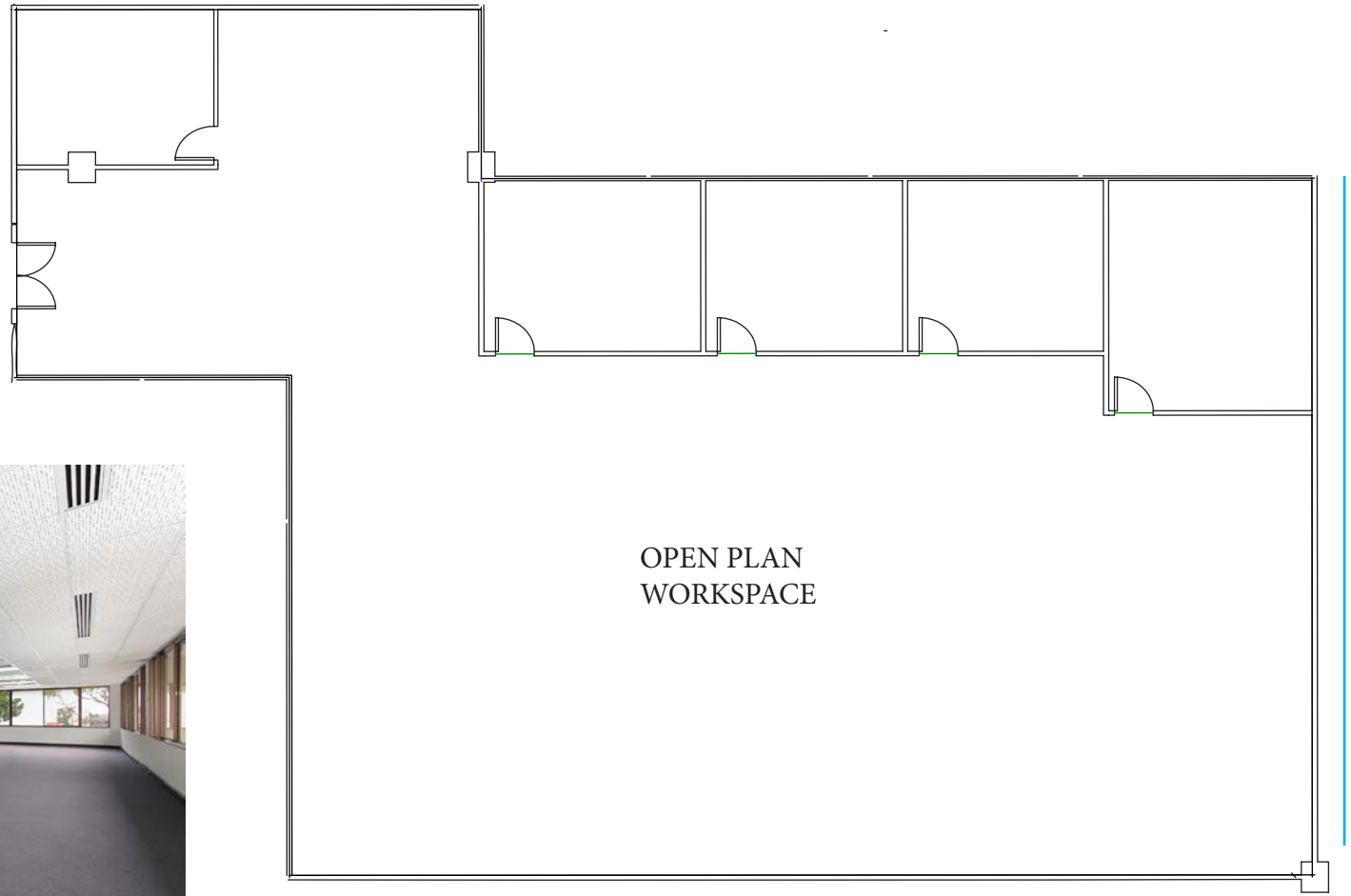
SUITE 204

NLA	156 sqm
OFFICES	6
SERVER ROOM	1
AVAILABLE	Now



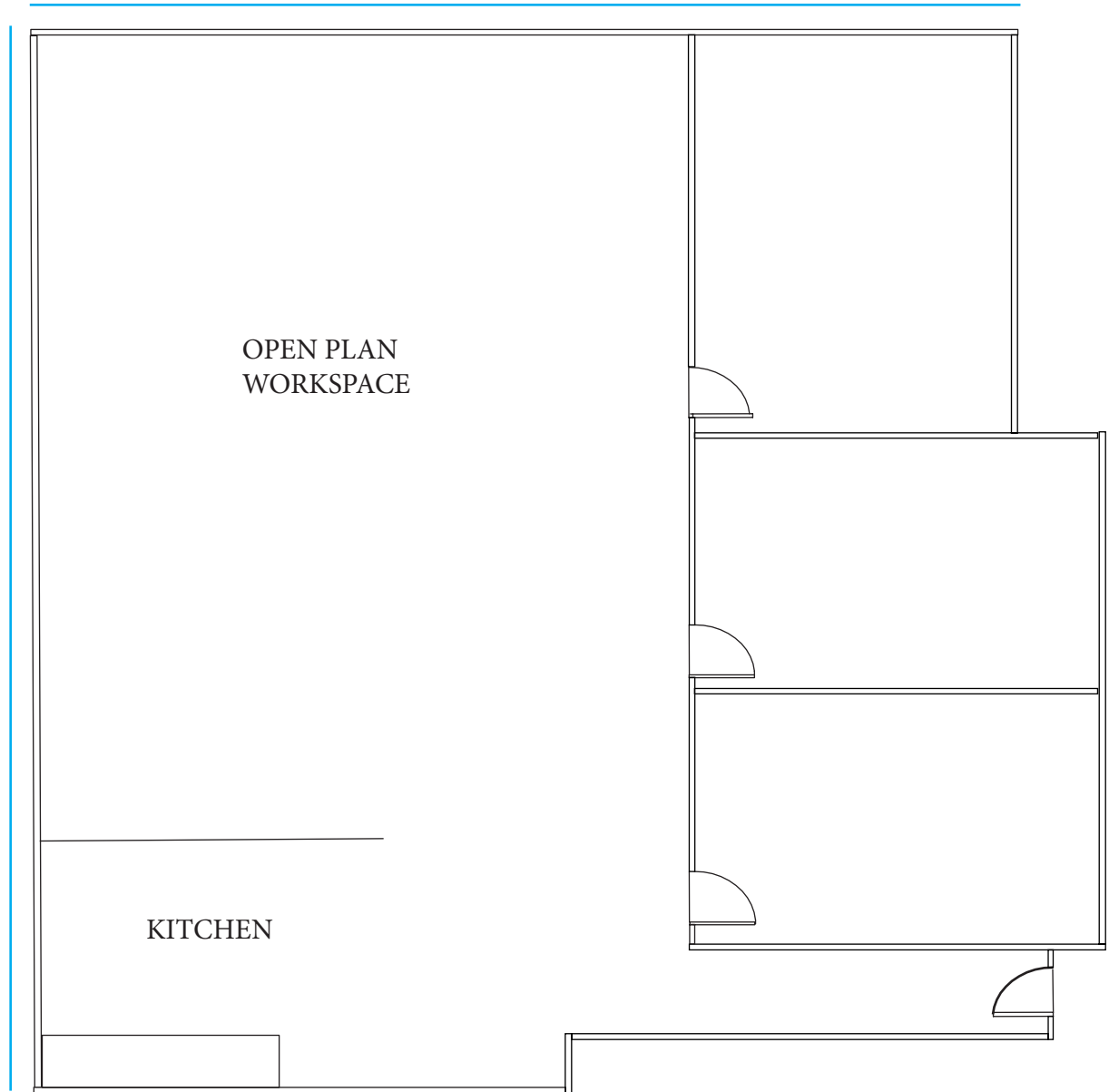
SUITE 206

NLA	350 sqm
OFFICES	4
SERVER ROOM	1
AVAILABLE	Now



SUITE 207

NLA	180 sqm
OFFICES	3
KITCHENETTE	1
AVAILABLE	Now

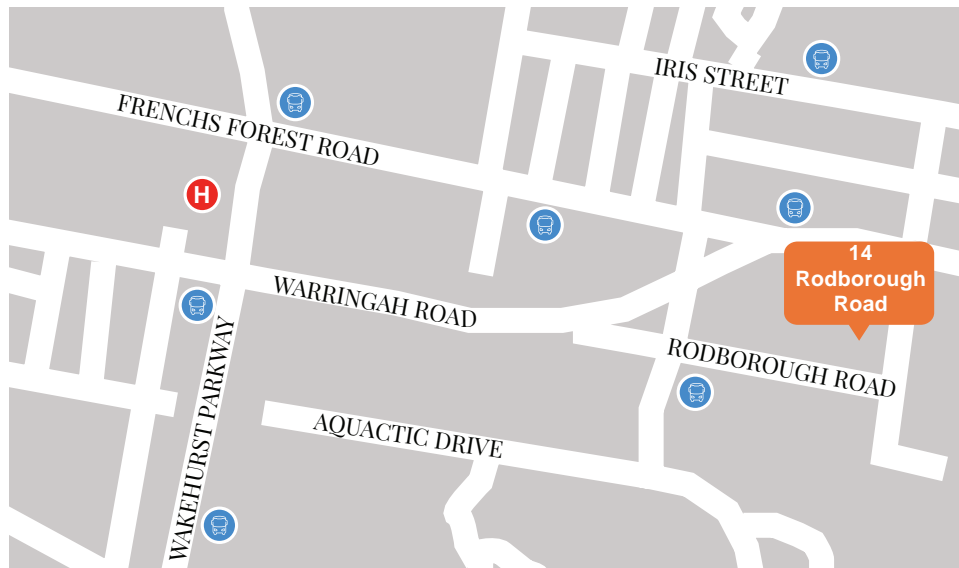


LOCATION

Rodborough Road is a well-established office location for many national and multi-national business, including Fuji Xerox, Australia Post and Telstra.

Just 30 minutes north of the Sydney CBD within the Northern Beaches region, the location offers a diverse mix of amenities. Child care centers, conference facilities, a gym and an abundance of eateries, recreational activities and shopping services are within close proximity.

In 2018 the new Northern Beaches Hospital will open minutes from the site, as a result the area is improving its roads, local transport and facilities.



GET IN CONTACT

For more information about suites at 14 Rodborough Road, contact us today.

If the fit-out is not quite what you are looking for, we can work together to re-model the space, resulting in something truly unique.

Tatiana Nikiforova

 0404 169 163

 tnikiforova@kingsmede.com.au



KINGSMEDE