

# FUNCTIONAL+ SPACE



**RESERVE INDUSTRIAL ESTATE**  
6 HOPE STREET, ERMINGTON, NSW





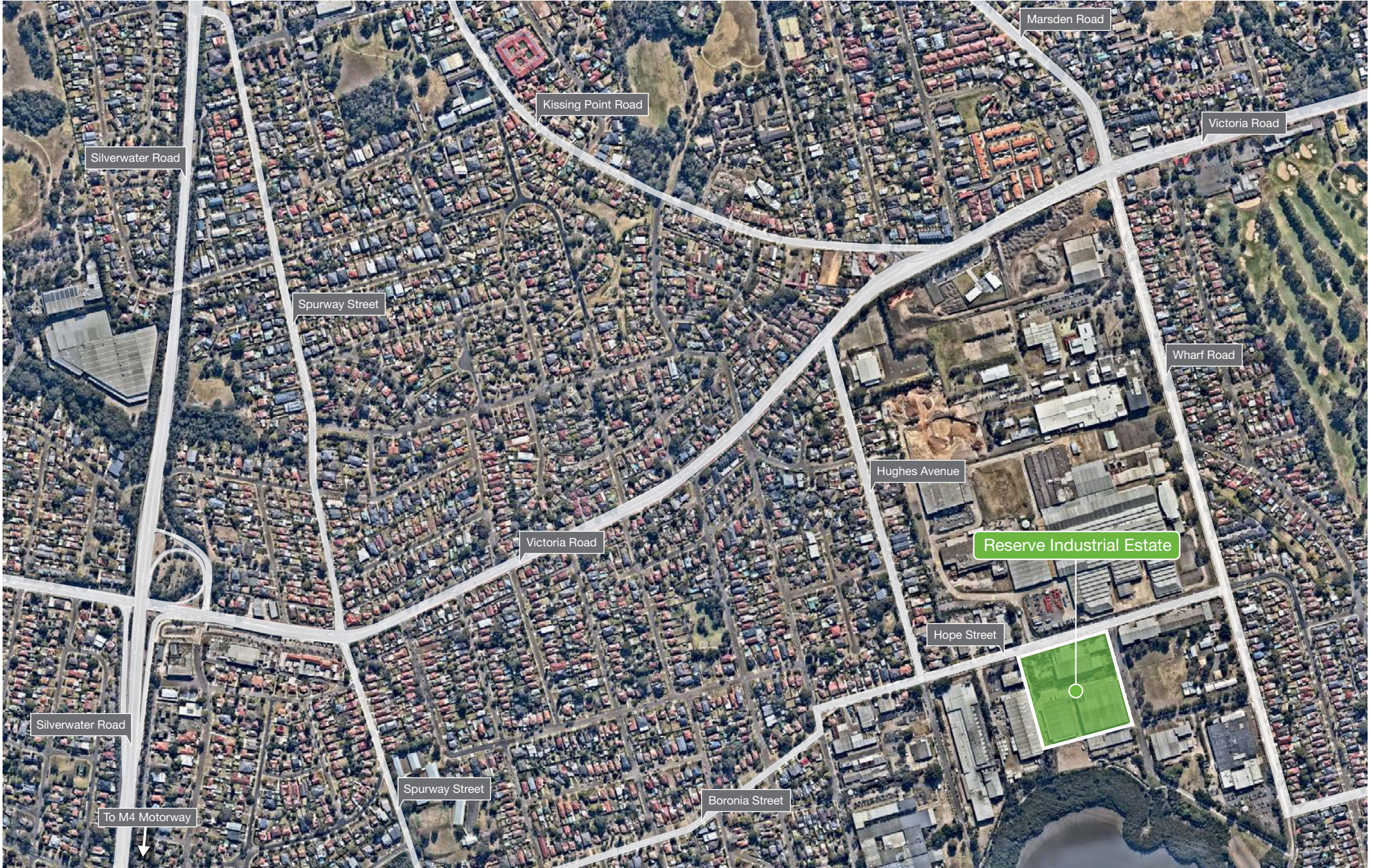
# Opportunity

Reserve Industrial Estate is a quality estate conveniently located off Victoria Road in Ermington, providing easy access to major roads including the M4 Motorway and Parramatta Road.

Building 3 is a 2,306 sqm freestanding facility, available from February 2020. Now is the time to join Computershare and IGT at this well-presented estate.









# Access

Reserve Industrial Estate is located within close proximity of Victoria and Silverwater Roads providing easy access to the M4 Motorway and Parramatta Road. The M2 Motorway is also accessible via Lane Cove Road.

Users also benefit from convenient access to nearby amenity and bus transport.



**USERS ENJOY CONVENIENT ACCESS TO THE M4 MOTORWAY AND PARRAMATTA ROAD**

## CENTRALLY CONNECTED



**30M**  
to nearest bus stop



**800M**  
to Victoria Road



**5KM**  
to M4 Motorway



**9.2KM**  
to M2 Motorway



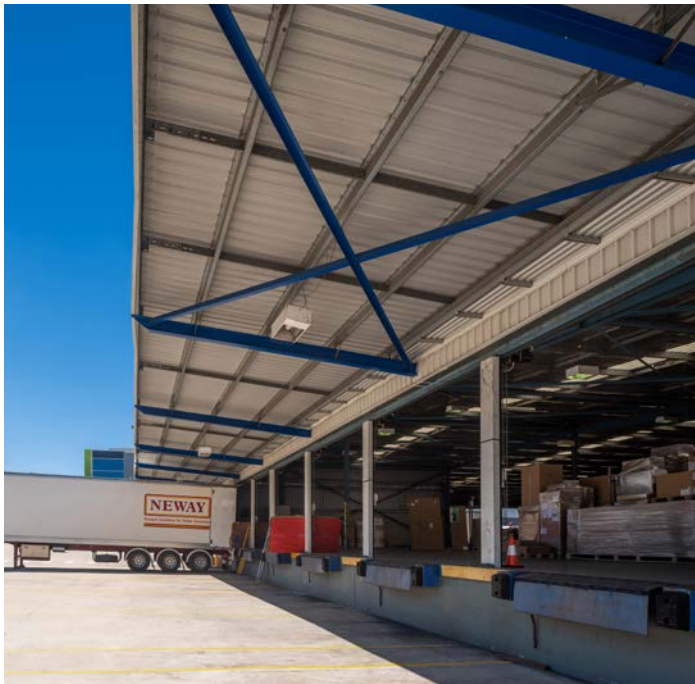
**16KM**  
to Sydney CBD



■ For lease

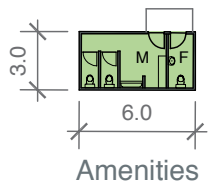
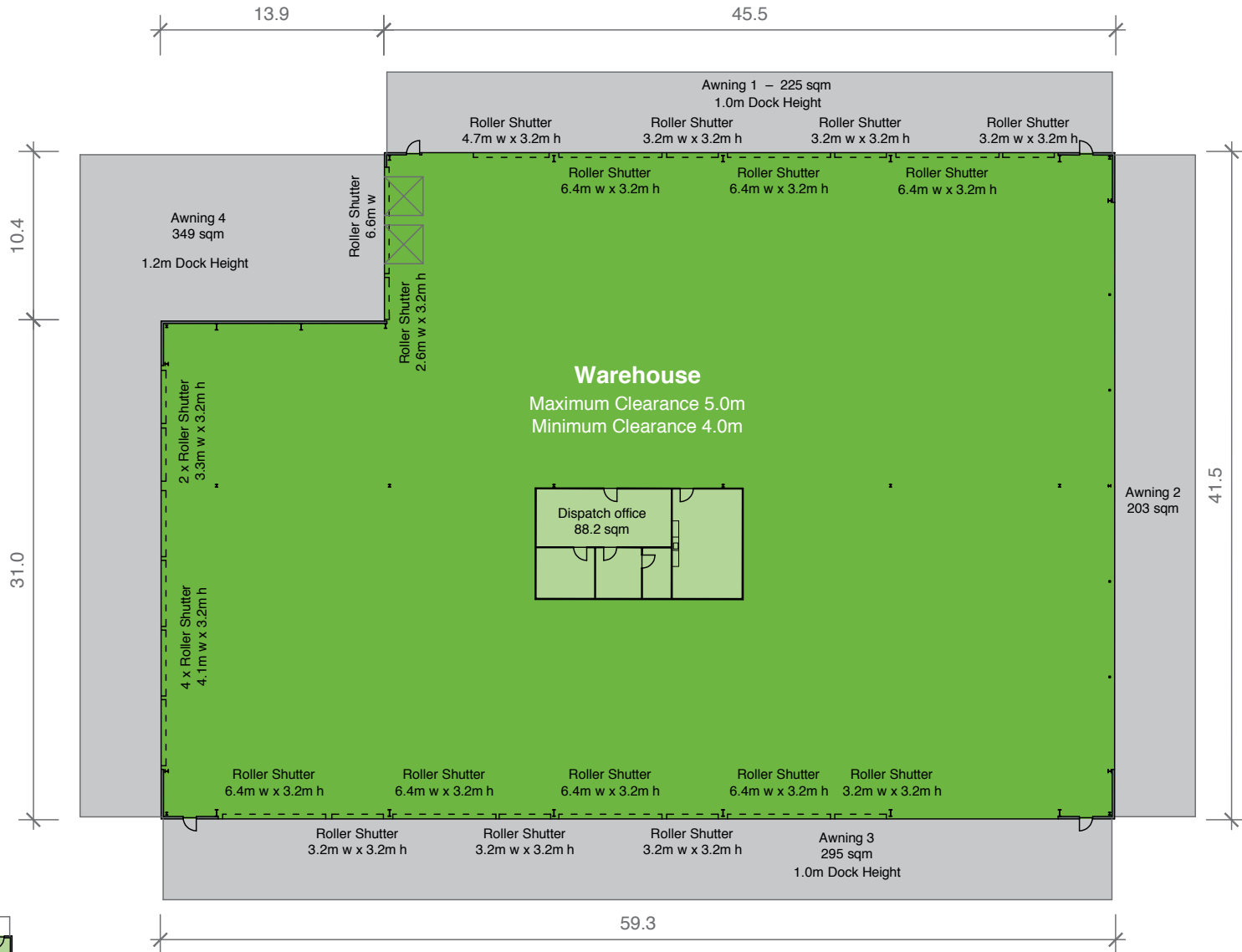
# Building 3

- + Cross dock facility with access from 3 sides of building
- + 2,305 sqm warehouse with dispatch office
- + Internal warehouse clearance of 4–5m
- + Access via multiple docks
- + Awnings for all-weather loading
- + Drive around truck access
- + On-site parking.





AREA SCHEDULE	SQM
Warehouse	2,305.6
Amenities	18.2
<b>Total area</b>	<b>2,323.8</b>



# Service

To ensure our customers receive the best possible service, all of our estates have in-house property services teams that attend to customers' operational needs and ensure maintenance and presentation standards are exceptional.



# Manage

Dedicated Building Managers provide on-site support for day-to-day operations, while Property and Asset Managers are available to discuss any lease queries, invoicing issues or modifications to tenancies.

**SUPERIOR  
CUSTOMER  
SERVICE IS AT  
THE HEART OF  
EVERYTHING  
WE DO**





# Contact

## **Matthew Hamilton**

Senior Portfolio Manager

**T** 02 9230 7329

**M** 0409 047 762

matthew.hamilton@goodman.com

## **Charlie Abou-Touma**

Asset Manager

**T** 02 9230 7416

**M** 0414 544 127

charlie.abou-touma@goodman.com

## **Goodman**

Level 17

60 Castlereagh Street

Sydney NSW 2000

**T** 02 9230 7400

[View this property online](#)

[goodman.com/au](http://goodman.com/au)

