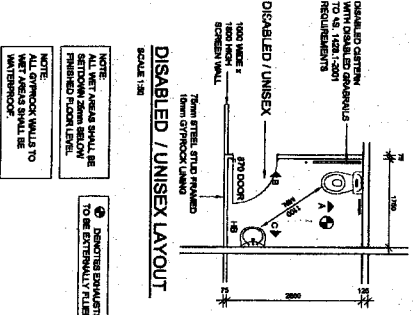


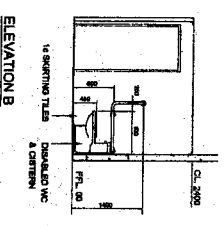
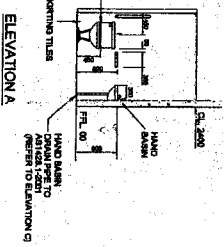
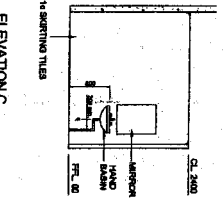
WINDOW & DOOR SCHEDULE

NO.	DESCRIPTION	FINISHES
1	2000 WIDE x 1400 HIGH ALUMINUM FRAME WITH 67% TRANSPARENT PANEL	ALUMINUM FRAME FINISH
2	2000 WIDE x 1400 HIGH ALUMINUM FRAME WITH 57% TRANSPARENT PANEL	ALUMINUM FRAME FINISH
3	2000 WIDE x 1400 HIGH ALUMINUM FRAME WITH 57% TRANSPARENT PANEL	ALUMINUM FRAME FINISH
4	2000 WIDE x 1400 HIGH ALUMINUM FRAME WITH 57% TRANSPARENT PANEL	ALUMINUM FRAME FINISH
5	2000 WIDE x 1400 HIGH ALUMINUM FRAME WITH 57% TRANSPARENT PANEL	ALUMINUM FRAME FINISH
6	2000 WIDE x 1400 HIGH ALUMINUM FRAME WITH 57% TRANSPARENT PANEL	ALUMINUM FRAME FINISH
7	2000 WIDE x 1400 HIGH ALUMINUM FRAME WITH 57% TRANSPARENT PANEL	ALUMINUM FRAME FINISH
8	2000 WIDE x 1400 HIGH ALUMINUM FRAME WITH 57% TRANSPARENT PANEL	ALUMINUM FRAME FINISH
9	2000 WIDE x 1400 HIGH ALUMINUM FRAME WITH 57% TRANSPARENT PANEL	ALUMINUM FRAME FINISH
10	2000 WIDE x 1400 HIGH ALUMINUM FRAME WITH 57% TRANSPARENT PANEL	ALUMINUM FRAME FINISH
11	2000 WIDE x 1400 HIGH ALUMINUM FRAME WITH 57% TRANSPARENT PANEL	ALUMINUM FRAME FINISH
12	2000 WIDE x 1400 HIGH ALUMINUM FRAME WITH 57% TRANSPARENT PANEL	ALUMINUM FRAME FINISH
13	2000 WIDE x 1400 HIGH ALUMINUM FRAME WITH 57% TRANSPARENT PANEL	ALUMINUM FRAME FINISH
14	2000 WIDE x 1400 HIGH ALUMINUM FRAME WITH 57% TRANSPARENT PANEL	ALUMINUM FRAME FINISH
15	2000 WIDE x 1400 HIGH ALUMINUM FRAME WITH 57% TRANSPARENT PANEL	ALUMINUM FRAME FINISH
16	2000 WIDE x 1400 HIGH ALUMINUM FRAME WITH 57% TRANSPARENT PANEL	ALUMINUM FRAME FINISH
17	2000 WIDE x 1400 HIGH ALUMINUM FRAME WITH 57% TRANSPARENT PANEL	ALUMINUM FRAME FINISH
18	2000 WIDE x 1400 HIGH ALUMINUM FRAME WITH 57% TRANSPARENT PANEL	ALUMINUM FRAME FINISH
19	2000 WIDE x 1400 HIGH ALUMINUM FRAME WITH 57% TRANSPARENT PANEL	ALUMINUM FRAME FINISH
20	2000 WIDE x 1400 HIGH ALUMINUM FRAME WITH 57% TRANSPARENT PANEL	ALUMINUM FRAME FINISH
21	2000 WIDE x 1400 HIGH ALUMINUM FRAME WITH 57% TRANSPARENT PANEL	ALUMINUM FRAME FINISH
22	2000 WIDE x 1400 HIGH ALUMINUM FRAME WITH 57% TRANSPARENT PANEL	ALUMINUM FRAME FINISH
23	2000 WIDE x 1400 HIGH ALUMINUM FRAME WITH 57% TRANSPARENT PANEL	ALUMINUM FRAME FINISH
24	2000 WIDE x 1400 HIGH ALUMINUM FRAME WITH 57% TRANSPARENT PANEL	ALUMINUM FRAME FINISH
25	2000 WIDE x 1400 HIGH ALUMINUM FRAME WITH 57% TRANSPARENT PANEL	ALUMINUM FRAME FINISH
26	2000 WIDE x 1400 HIGH ALUMINUM FRAME WITH 57% TRANSPARENT PANEL	ALUMINUM FRAME FINISH
27	2000 WIDE x 1400 HIGH ALUMINUM FRAME WITH 57% TRANSPARENT PANEL	ALUMINUM FRAME FINISH
28	2000 WIDE x 1400 HIGH ALUMINUM FRAME WITH 57% TRANSPARENT PANEL	ALUMINUM FRAME FINISH
29	2000 WIDE x 1400 HIGH ALUMINUM FRAME WITH 57% TRANSPARENT PANEL	ALUMINUM FRAME FINISH
30	2000 WIDE x 1400 HIGH ALUMINUM FRAME WITH 57% TRANSPARENT PANEL	ALUMINUM FRAME FINISH
31	2000 WIDE x 1400 HIGH ALUMINUM FRAME WITH 57% TRANSPARENT PANEL	ALUMINUM FRAME FINISH
32	2000 WIDE x 1400 HIGH ALUMINUM FRAME WITH 57% TRANSPARENT PANEL	ALUMINUM FRAME FINISH
33	2000 WIDE x 1400 HIGH ALUMINUM FRAME WITH 57% TRANSPARENT PANEL	ALUMINUM FRAME FINISH
34	2000 WIDE x 1400 HIGH ALUMINUM FRAME WITH 57% TRANSPARENT PANEL	ALUMINUM FRAME FINISH
35	2000 WIDE x 1400 HIGH ALUMINUM FRAME WITH 57% TRANSPARENT PANEL	ALUMINUM FRAME FINISH
36	2000 WIDE x 1400 HIGH ALUMINUM FRAME WITH 57% TRANSPARENT PANEL	ALUMINUM FRAME FINISH
37	2000 WIDE x 1400 HIGH ALUMINUM FRAME WITH 57% TRANSPARENT PANEL	ALUMINUM FRAME FINISH
38	2000 WIDE x 1400 HIGH ALUMINUM FRAME WITH 57% TRANSPARENT PANEL	ALUMINUM FRAME FINISH
39	2000 WIDE x 1400 HIGH ALUMINUM FRAME WITH 57% TRANSPARENT PANEL	ALUMINUM FRAME FINISH
40	2000 WIDE x 1400 HIGH ALUMINUM FRAME WITH 57% TRANSPARENT PANEL	ALUMINUM FRAME FINISH
41	2000 WIDE x 1400 HIGH ALUMINUM FRAME WITH 57% TRANSPARENT PANEL	ALUMINUM FRAME FINISH
42	2000 WIDE x 1400 HIGH ALUMINUM FRAME WITH 57% TRANSPARENT PANEL	ALUMINUM FRAME FINISH
43	2000 WIDE x 1400 HIGH ALUMINUM FRAME WITH 57% TRANSPARENT PANEL	ALUMINUM FRAME FINISH
44	2000 WIDE x 1400 HIGH ALUMINUM FRAME WITH 57% TRANSPARENT PANEL	ALUMINUM FRAME FINISH
45	2000 WIDE x 1400 HIGH ALUMINUM FRAME WITH 57% TRANSPARENT PANEL	ALUMINUM FRAME FINISH
46	2000 WIDE x 1400 HIGH ALUMINUM FRAME WITH 57% TRANSPARENT PANEL	ALUMINUM FRAME FINISH
47	2000 WIDE x 1400 HIGH ALUMINUM FRAME WITH 57% TRANSPARENT PANEL	ALUMINUM FRAME FINISH
48	2000 WIDE x 1400 HIGH ALUMINUM FRAME WITH 57% TRANSPARENT PANEL	ALUMINUM FRAME FINISH
49	2000 WIDE x 1400 HIGH ALUMINUM FRAME WITH 57% TRANSPARENT PANEL	ALUMINUM FRAME FINISH
50	2000 WIDE x 1400 HIGH ALUMINUM FRAME WITH 57% TRANSPARENT PANEL	ALUMINUM FRAME FINISH

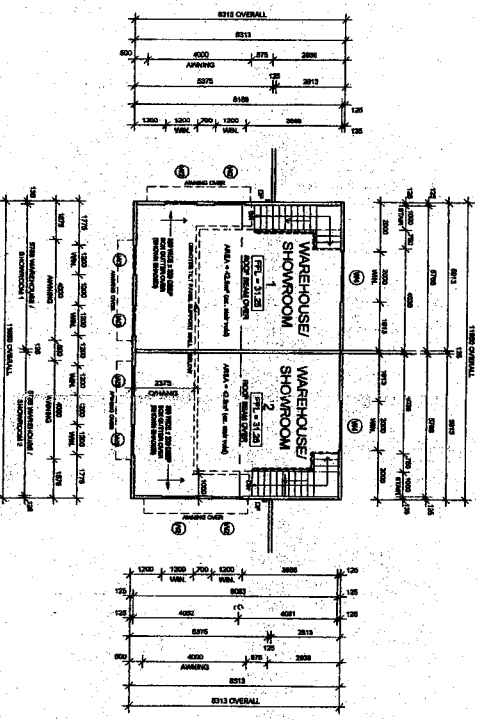
PROPOSED FLOOR LAYOUT
SCALE 1/8" = 1'-0"



DISABLED / UNISEX LAYOUT
SCALE 1/8" = 1'-0"



DISABLED TOILET ELEVATIONS
SCALE 1/8" = 1'-0"



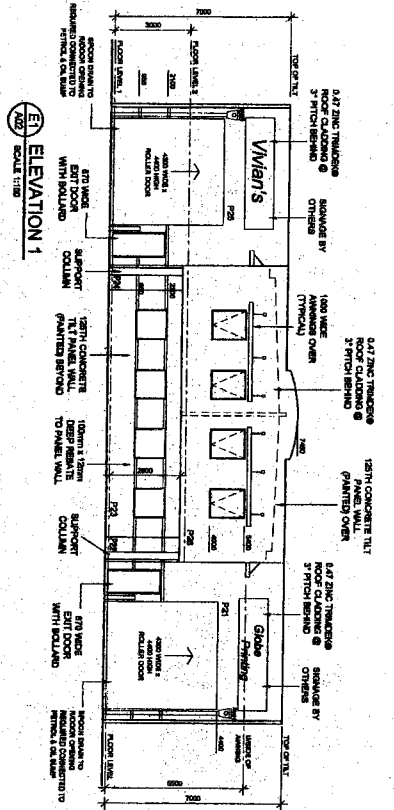
NO.	REVISION	DATE	BY	CHKD BY
1	ISSUED FOR 3-DING LICENSE APPLICATION			
2	REVISION 06 - 3-D LAYOUT			
3	REVISION 07 - NORTH			
4	REVISION 08 - WINDOW			

NOTE:
THESE DRAWINGS NOT TO BE USED FOR CONSTRUCTION WORKS OR SETOUTS. DETAILED CONSTRUCTION SHOP DRAWINGS TO FOLLOW.

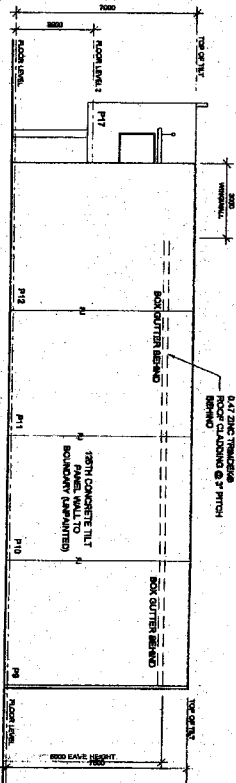
MICHELLE CHASE
DRAFTING & DESIGN SERVICES
1022 GUNNABY CIRCUIT
TOWN OF WAVERLEY
WA 98155
PH: 0407 427 281

THIS IS TO CERTIFY THAT THE SIGNATURE AND ADDRESS OF THE DESIGNER HAS BEEN VERIFIED BY THE REGISTERED PROFESSIONAL ENGINEER AND THE REQUIREMENTS OF THE BUILDING CODE OF AUSTRALIA HAVE BEEN MET IN FULL. THIS CERTIFICATE IS VALID FOR THE PERIOD OF 12 MONTHS FROM THE DATE OF SIGNATURE.

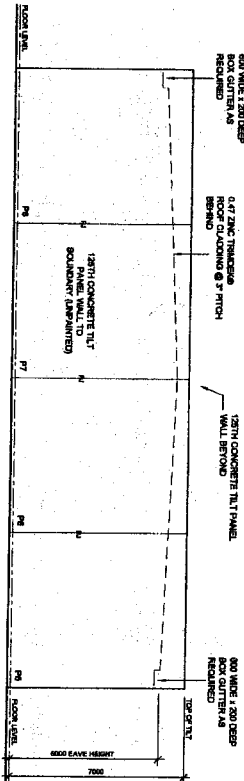
TITLE	CLIENT	ADDRESS	CITY	STATE	POSTAL CODE
PROPOSED FLOOR LAYOUTS	GRAHAM VINN	LOT 918 MARGALANT CIRCUIT CAMBRIDGE WA 9155	CAMBRIDGE	WA	9155



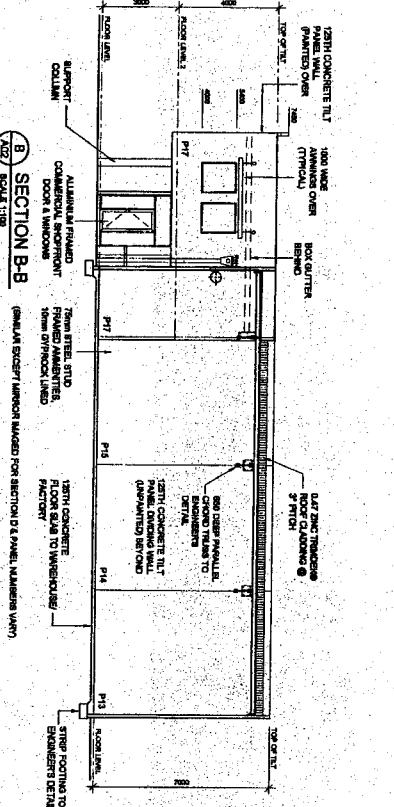
E1 ELEVATION 1
SCALE 1/16"



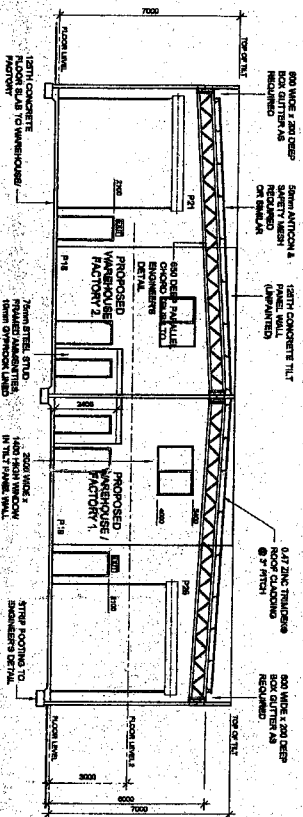
E2 ELEVATION 2
SCALE 1/16"



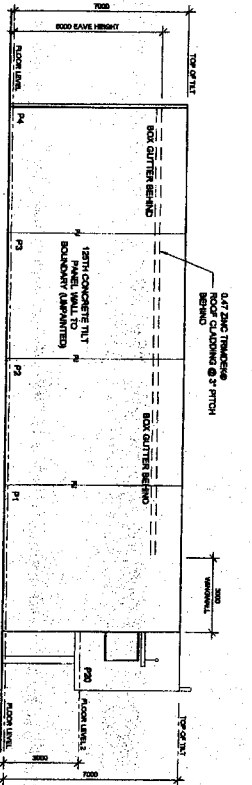
E3 ELEVATION 3
SCALE 1/16"



B SECTION B-B
SCALE 1/16"



C SECTION C-C
SCALE 1/16"



E4 ELEVATION 4
SCALE 1/16"

NO.	REVISION	DATE	BY	CHKD.	DATE	BY	CHKD.

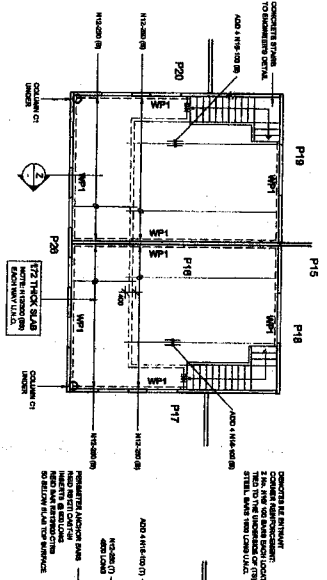
NOTE:
THESE DRAWINGS NOT
TO BE USED FOR
CONSTRUCTION WORKS
OR SETOUTS.
DETAILED CONSTRUCTION SHOP
DRAWINGS TO FOLLOW.

MICHELLE CHASE
DRAFTING & DESIGN SERVICES
1700 GUNNABURG CIRCUIT
TOWSON, MD 21286
PH: 410/427-281

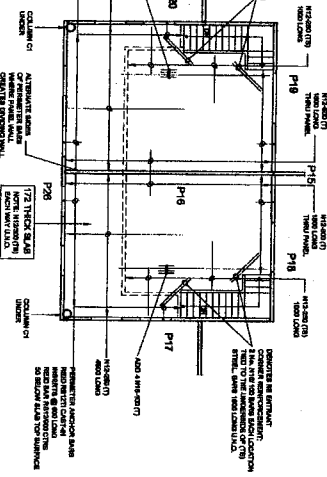
DISCLAIMER:
THIS IS TO CERTIFY THAT THE DRAWING, SPECIFICATIONS AND NOTATIONS COMPLY WITH THE REQUIREMENTS OF THE BUILDING CODE OF MARYLAND, TITLE 17, SUBTITLE 100, AND THE REQUIREMENTS OF THE BUILDING CODE OF VIRGINIA, TITLE 55, CHAPTER 55-52, AND THE REQUIREMENTS OF THE BUILDING CODE OF WEST VIRGINIA, TITLE 55, CHAPTER 55-52. THE DRAWING, SPECIFICATIONS AND NOTATIONS DO NOT CONSTITUTE A PROFESSIONAL ENGINEERING DESIGN OR A PROFESSIONAL ARCHITECTURAL DESIGN. THE DRAWING, SPECIFICATIONS AND NOTATIONS ARE THE PROPERTY OF MICHELLE CHASE DRAFTING & DESIGN SERVICES. NO PART OF THIS DRAWING, SPECIFICATIONS AND NOTATIONS SHALL BE REPRODUCED OR TRANSMITTED IN ANY FORM OR BY ANY MEANS, WITHOUT THE WRITTEN PERMISSION OF MICHELLE CHASE DRAFTING & DESIGN SERVICES.

TITLE	MATERIALS & SECTIONS		
CLIENT	GRAHAM WAIN	DATE	1/17
PROJECT	LOT 518 HUNTERS CIRCUIT CANNONVALE, VA 22826	SCALE	AS SHOWN
DRAWN BY	ASD	CHECKED BY	ASD
DATE	1/17	SCALE	AS SHOWN

**BOTTOM REINFORCEMENT
SUSPENDED CONCRETE FLOOR SLAB**
SCALE: 1/8" = 1'-0"

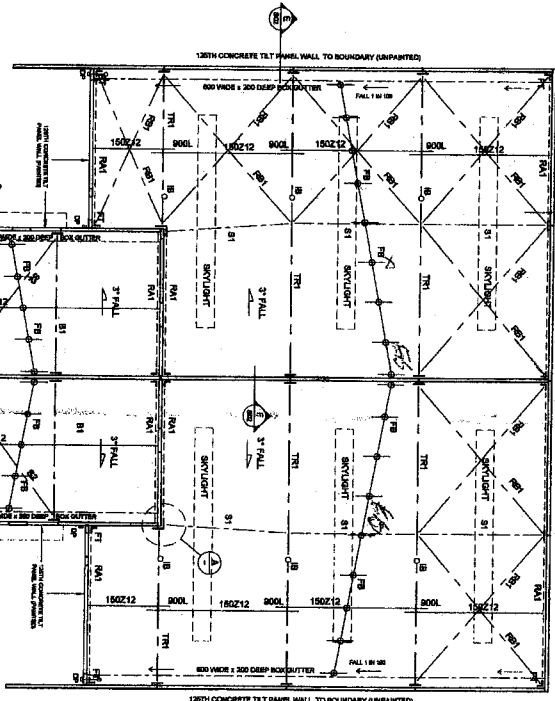


**TOP REINFORCEMENT
SUSPENDED CONCRETE FLOOR SLAB**
SCALE: 1/8" = 1'-0"

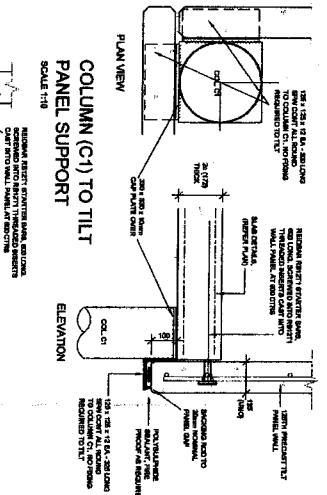


STRUCTURAL ROOF PLAN

NOTE: ALL ROOF FILING TO BE STOOD UP 5" MIN.



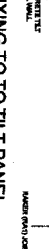
NO.	DATE	BY	CHECKED	REV.	DATE	REASON	BY	CHECKED
1	04/11/2023	MS	MS					
2	04/11/2023	MS	MS					
3	04/11/2023	MS	MS					
4	04/11/2023	MS	MS					
5	04/11/2023	MS	MS					
6	04/11/2023	MS	MS					
7	04/11/2023	MS	MS					



SECTION Z
SCALE: 1/8" = 1'-0"



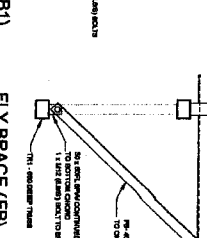
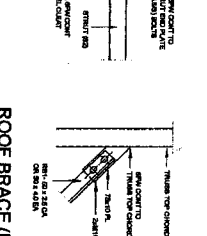
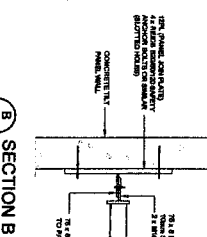
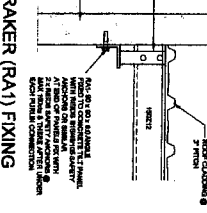
SECTION D
SCALE: 1/8" = 1'-0"



SECTION B
SCALE: 1/8" = 1'-0"



DETAIL A
SCALE: 1/8" = 1'-0"



SPECIFICATION	
TABLE NO.	171-01 (REV. 03/2013)
PROJECT NO.	171-01 (REV. 03/2013)
DATE	03/13/2013
REVISED	03/13/2013
DRAWING NO.	03/13/2013
DRAWING DATE	03/13/2013
DRAWING BY	MS
DRAWING CHECKED	MS
APPROVED BY	MS
DATE	03/13/2013

NOTES:

- STRUCTURAL MEMBERS TO BE BUILT IN CONFORMANCE WITH ALL APPLICABLE CODES AND SPECIFICATIONS.
- CONCRETE TO BE CAST AND CURED IN ACCORDANCE WITH ALL APPLICABLE CODES AND SPECIFICATIONS.
- ALL DIMENSIONS UNLESS OTHERWISE SPECIFIED ARE IN FEET AND INCHES (1" = 12").
- ALL DIMENSIONS SHALL BE TO FACE UNLESS OTHERWISE SPECIFIED.
- ALL DIMENSIONS SHALL BE TO FACE UNLESS OTHERWISE SPECIFIED.

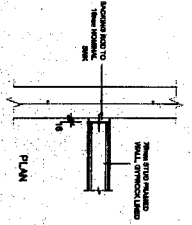
NOTE:
THESE DRAWINGS NOT TO BE USED FOR CONSTRUCTION WORKS OR SETOUTS.
DETAILED CONSTRUCTION SHOP DRAWINGS TO FOLLOW.

MICHELLE CHASE
DRAWING & DESIGN SERVICES
1022 GUNNABRI CIRCUIT
TOM PRICE WA 9731
PH: 0407 427 281

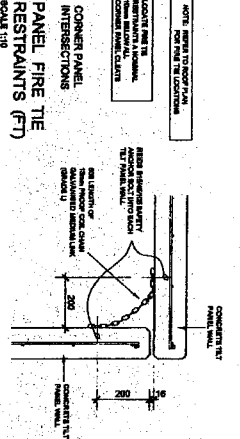
THIS IS TO CERTIFY THAT THE DRAWINGS AND SPECIFICATIONS FOR THE ROOF STRUCTURE HAVE BEEN PREPARED BY ME OR UNDER MY CLOSE PERSONAL SUPERVISION AND THAT I AM A REGISTERED PROFESSIONAL ENGINEER IN THE STATE OF WESTERN AUSTRALIA. I ACCEPT RESPONSIBILITY FOR THE ACCURACY AND COMPLETENESS OF THE INFORMATION PROVIDED IN THESE DRAWINGS AND SPECIFICATIONS AND I AGREE TO BE BOUND BY THE PROVISIONS OF THE ENGINEERING PROFESSIONAL BOARD ACT 2001 AND THE ENGINEERING PROFESSIONAL BOARD REGULATIONS 2002.

REGISTERED PROFESSIONAL ENGINEER
MICHÉLLE CHASE
NO. 45077
DATE: 04/11/2023

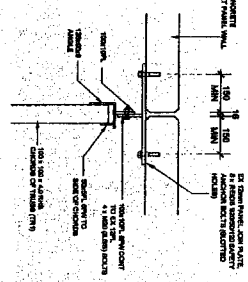
THIS STRUCTURAL ROOF PLAN, SUSPENDED FLOOR SLAB & DETAILS
DRAWN BY: GUNNABRI VANNAN
CHECKED BY: LOTTE MICROVAULT CIRCUIT
DATE: 04/11/2023
SCALE: AS SHOWN



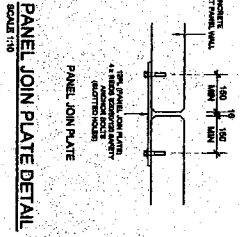
PANEL / STUDWORK JUNCTIONS
SCALE 1/8"



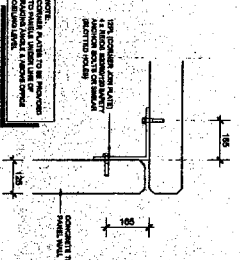
PANEL FIRE TIE
RESISTANTS (FT)
SCALE 1/8"



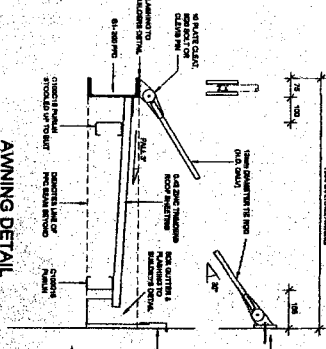
TRUSS TO PANEL DETAIL
SCALE 1/8"



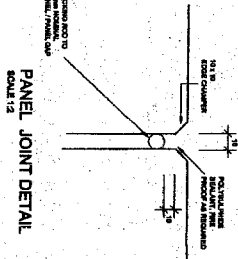
PANEL JOINT PLATE DETAIL
SCALE 1/8"



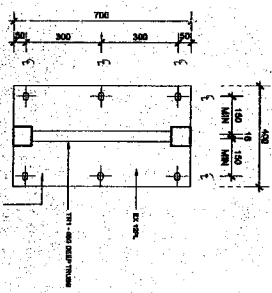
CORNER JOINT DETAIL
SCALE 1/8"



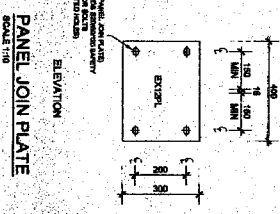
AWNING DETAIL
SCALE 1/8"



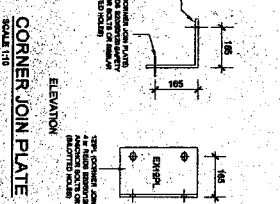
PANEL JOINT DETAIL
SCALE 1/8"



TRUSS (TRI) CONNECTION PLATE
SCALE 1/8"

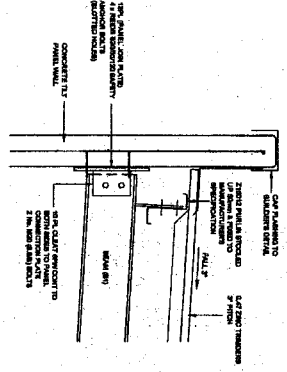


PANEL JOINT PLATE
SCALE 1/8"

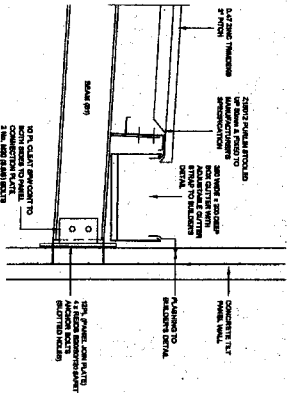


CORNER JOINT PLATE
SCALE 1/8"

REBATE DETAIL
(FEATURE PANEL RECESS)
SCALE 1/8"



SAFETY BOLTS (IB)
SCALE 1/8"

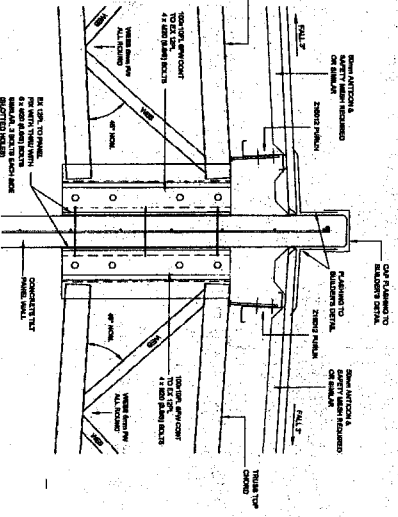
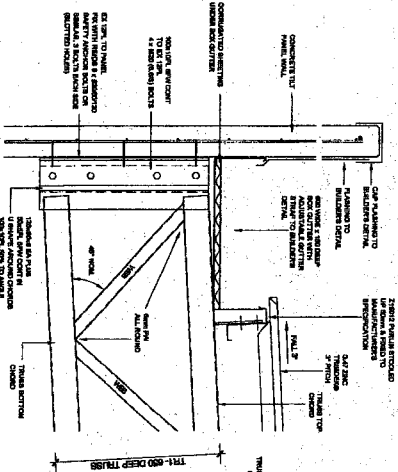


SECTION C
SCALE 1/8"

SECTION D
SCALE 1/8"

SECTION E
SCALE 1/8"

SECTION F
SCALE 1/8"



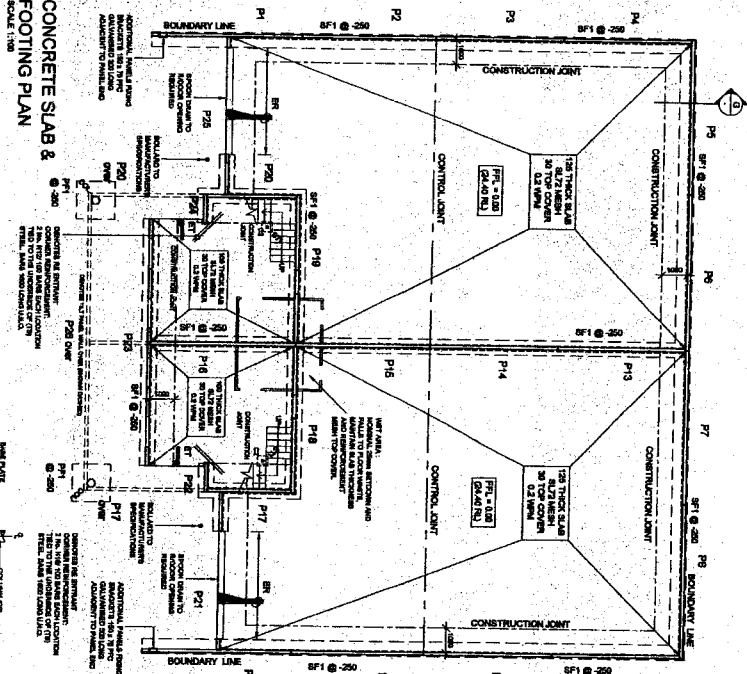
REV. NO.	DATE	DETAILS	BY	CHECKED	DATE
A		ISSUED FOR BUILDING LICENSE APPLICATION			
B		AWNING DETAIL REVISED	MC 5/10/07	MC 6/20/07	

NOTE:
THESE DRAWINGS NOT
TO BE USED FOR
CONSTRUCTION WORKS
OR SETOUTS.
DETAILED CONSTRUCTION SHOP
DRAWINGS TO FOLLOW.

MICHELLE CHASE
DEALING & DESIGN SERVICES
1022 GUNNAPARK CIRCUIT
TOWN PRIDE VILLAGE
PH: 0487 427 281

THIS IS TO CERTIFY THAT THE ABOVE DRAWING REPRESENTS THE WORK OF THE ARCHITECT AND THAT THE ARCHITECT HAS REVIEWED THE DRAWING AND IS SATISFIED WITH THE REPRESENTATION OF THE WORK AND THE QUALITY OF THE DRAWING. THE ARCHITECT'S LIABILITY IS LIMITED TO THE WORK AND THE QUALITY OF THE DRAWING. THE ARCHITECT'S LIABILITY IS NOT TO BE EXTENDED TO ANY OTHER WORK OR TO ANY OTHER PARTY.

TITLE	CLIENT	DATE	SCALE
STRUCTURAL DETAILS	GRAHAM WYMAN	5/10/07	AS SHOWN
LOT 918 ROXBOROUGH CIRCUIT	CANNONVALE, WA 6155		



FOOTING SCHEDULE

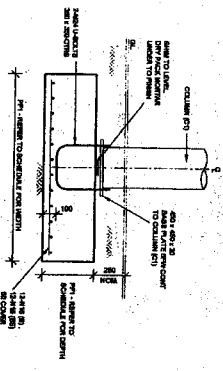
SF1 - 800 WIDE X 300 DEEP
CONCRETE STRIP FOOTING
FORM-4, 50 BTM COVER

P1 - 1800 X 1300 X 400 DEEP
MASS CONCRETE PAD FOOTING
12" MIN (8), 12" MIN (8) 50 COVER

S1 - 400 X 400 X 250 DEEP SLAB THICKENING

NOTE: DIMENSIONS NOTED ON PLANS ARE TAKEN FROM EXTERIOR FACE UNLESS OTHERWISE NOTED.

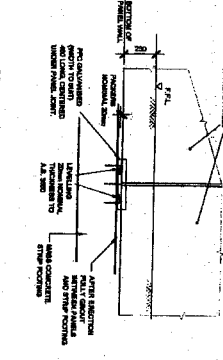
COLUMN C1 PAD FOOTING
SCALE 1/8"=1'-0"



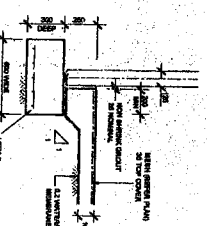
COLUMN C2 TO SLAB
SCALE 1/8"=1'-0"



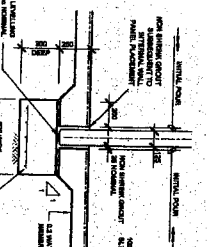
STRIP FOOTING ELEVATION
SCALE 1/8"=1'-0"



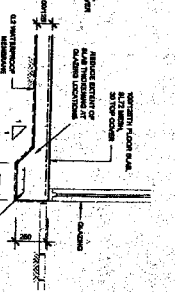
EXTERNAL PANELS BETWEEN PFC
SCALE 1/8"=1'-0"



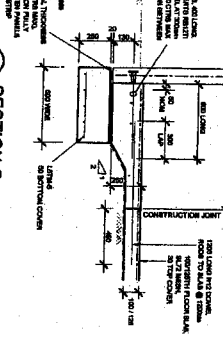
INTERNAL PANELS STRIP FOOTING
SCALE 1/8"=1'-0"



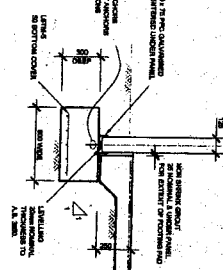
SLAB EDGE THICKENING
SCALE 1/8"=1'-0"



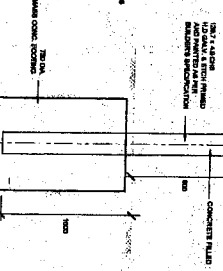
SECTION G
SCALE 1/8"=1'-0"



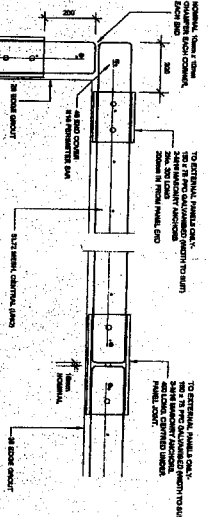
EXTERNAL FOOTING PAD
SCALE 1/8"=1'-0"



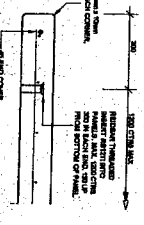
BOLLARD
SCALE 1/8"=1'-0"



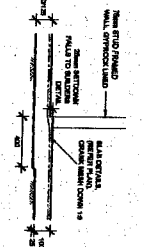
PART PANEL SECTION AT GROUND LEVEL
SCALE 1/8"=1'-0"



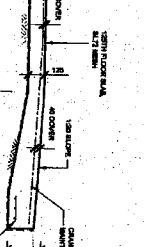
PLAN PANEL SECTION ANCHOR DETAIL
SCALE 1/8"=1'-0"



WET AREA SETDOWN
SCALE 1/8"=1'-0"



RAMP DETAIL (ER)
SCALE 1/8"=1'-0"



REVISIONS

1. CORRECTED DIMENSIONS ON INTERIOR PANELS TO MATCH THE PERMANENT RECORD.
2. ADDED DIMENSIONS TO EXTERNAL PANELS TO MATCH THE PERMANENT RECORD.
3. REVISED DIMENSIONS TO EXTERNAL PANELS TO MATCH THE PERMANENT RECORD.
4. REVISED DIMENSIONS TO EXTERNAL PANELS TO MATCH THE PERMANENT RECORD.
5. REVISED DIMENSIONS TO EXTERNAL PANELS TO MATCH THE PERMANENT RECORD.
6. REVISED DIMENSIONS TO EXTERNAL PANELS TO MATCH THE PERMANENT RECORD.
7. REVISED DIMENSIONS TO EXTERNAL PANELS TO MATCH THE PERMANENT RECORD.
8. REVISED DIMENSIONS TO EXTERNAL PANELS TO MATCH THE PERMANENT RECORD.
9. REVISED DIMENSIONS TO EXTERNAL PANELS TO MATCH THE PERMANENT RECORD.
10. REVISED DIMENSIONS TO EXTERNAL PANELS TO MATCH THE PERMANENT RECORD.

REVISIONS

NO.	DATE	DESCRIPTION	BY	CHKD.
1	10/15/10	ISSUED FOR PERMANENT RECORD	JM	MS
2	10/15/10	ISSUED FOR PERMANENT RECORD	JM	MS
3	10/15/10	ISSUED FOR PERMANENT RECORD	JM	MS
4	10/15/10	ISSUED FOR PERMANENT RECORD	JM	MS
5	10/15/10	ISSUED FOR PERMANENT RECORD	JM	MS
6	10/15/10	ISSUED FOR PERMANENT RECORD	JM	MS
7	10/15/10	ISSUED FOR PERMANENT RECORD	JM	MS
8	10/15/10	ISSUED FOR PERMANENT RECORD	JM	MS
9	10/15/10	ISSUED FOR PERMANENT RECORD	JM	MS
10	10/15/10	ISSUED FOR PERMANENT RECORD	JM	MS

GENERAL NOTES

1. ALL DIMENSIONS ARE TO FACE UNLESS OTHERWISE NOTED.
2. ALL DIMENSIONS ARE TO FACE UNLESS OTHERWISE NOTED.
3. ALL DIMENSIONS ARE TO FACE UNLESS OTHERWISE NOTED.
4. ALL DIMENSIONS ARE TO FACE UNLESS OTHERWISE NOTED.
5. ALL DIMENSIONS ARE TO FACE UNLESS OTHERWISE NOTED.
6. ALL DIMENSIONS ARE TO FACE UNLESS OTHERWISE NOTED.
7. ALL DIMENSIONS ARE TO FACE UNLESS OTHERWISE NOTED.
8. ALL DIMENSIONS ARE TO FACE UNLESS OTHERWISE NOTED.
9. ALL DIMENSIONS ARE TO FACE UNLESS OTHERWISE NOTED.
10. ALL DIMENSIONS ARE TO FACE UNLESS OTHERWISE NOTED.

REQUIRED FOR BUILDING LICENSE APPLICATION

NO.	DATE	DESCRIPTION	BY	CHKD.
1	10/15/10	ISSUED FOR BUILDING LICENSE APPLICATION	JM	MS
2	10/15/10	ISSUED FOR BUILDING LICENSE APPLICATION	JM	MS
3	10/15/10	ISSUED FOR BUILDING LICENSE APPLICATION	JM	MS
4	10/15/10	ISSUED FOR BUILDING LICENSE APPLICATION	JM	MS
5	10/15/10	ISSUED FOR BUILDING LICENSE APPLICATION	JM	MS
6	10/15/10	ISSUED FOR BUILDING LICENSE APPLICATION	JM	MS
7	10/15/10	ISSUED FOR BUILDING LICENSE APPLICATION	JM	MS
8	10/15/10	ISSUED FOR BUILDING LICENSE APPLICATION	JM	MS
9	10/15/10	ISSUED FOR BUILDING LICENSE APPLICATION	JM	MS
10	10/15/10	ISSUED FOR BUILDING LICENSE APPLICATION	JM	MS

NOTE:
THESE DRAWINGS NOT TO BE USED FOR CONSTRUCTION WORKS OR SETOUTS. DETAILED CONSTRUCTION SHOP DRAWINGS TO FOLLOW.

MICHELLE CHASE
DESIGNING & DESIGN SERVICES
1022 GAUGHER CIRCUIT
TOLL FREE 800 878 8811
PH: 803 427 2811

CONCRETE LAYOUT & DETAILS

TITLE	CLIENT	DATE	SCALE	AS SHOWN	SOS
CONCRETE LAYOUT & DETAILS	GRAVANA WYMAN	10/15/10	1/8"=1'-0"		
	LOT 918 MORNHUNT CIRCUIT				
	CANNINGVALE WVA 0155				

