

**DEVELOPMENT STATISTICS**

WAREHOUSE	1,520 M <sup>2</sup>	1/100 M <sup>2</sup>	15.20 BAYS
OFFICE	183 M <sup>2</sup>	1/30 M <sup>2</sup>	6.10 BAYS
<b>TOTAL</b>	<b>1,703 M<sup>2</sup></b>		<b>21.30 BAYS</b>
<b>BAYS REQUIRED</b>			<b>22.00 BAYS</b>

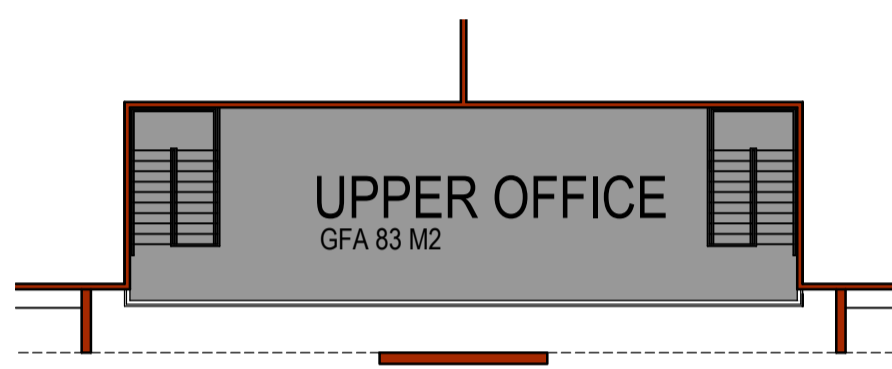
**SITE YIELD** 67.1%

**SITE AREA** 2,537 M<sup>2</sup>

**LANDSCAPE LEGEND**

NOTE: ALL LANDSCAPING WATERED BY FULLY AUTOMATIC RETICULATION SYSTEM.  
GARDEN BEDS TO HAVE 75MM KARRI MULCH TOPPING

- CALLISTRON (KINGS PARK SPECIAL)
- GREVILLEA LANIGERA MT TAMBORITHA
- OPHIOPOGON JAPONICA
- COUCH GRASS



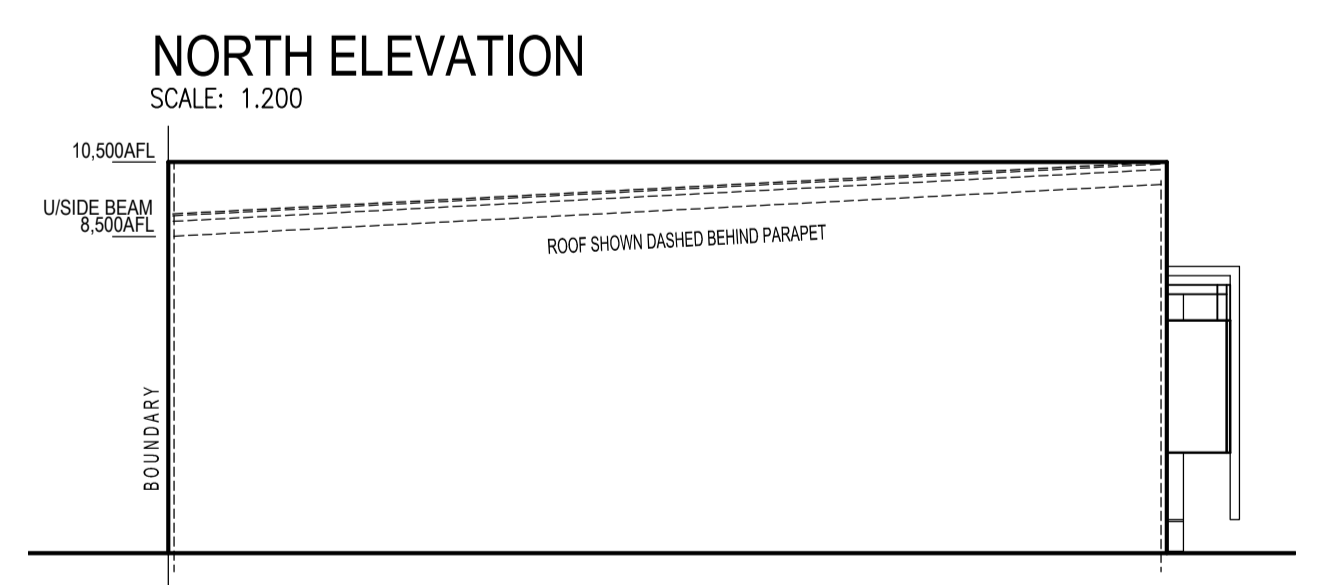
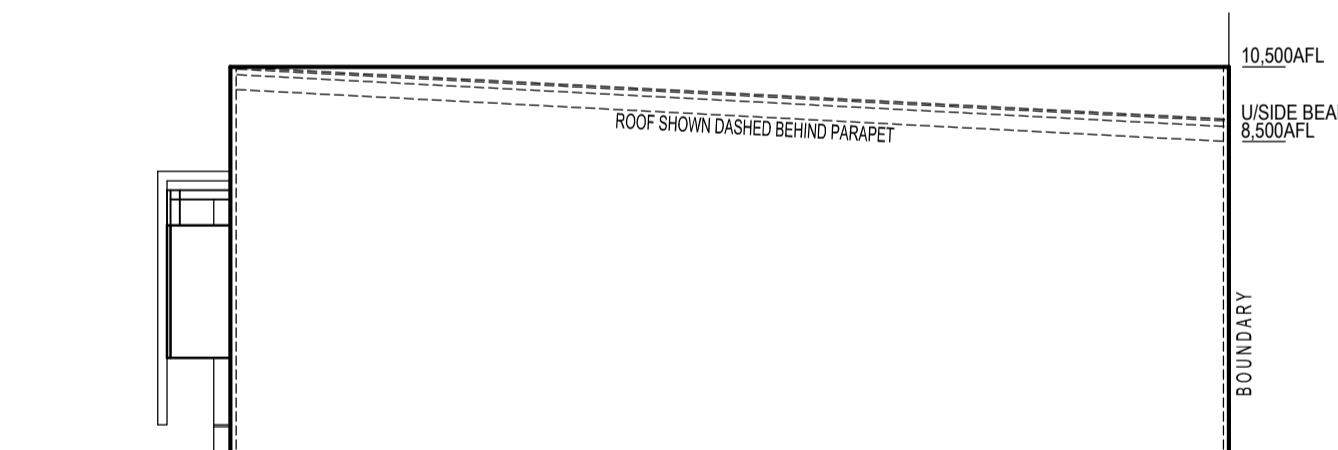
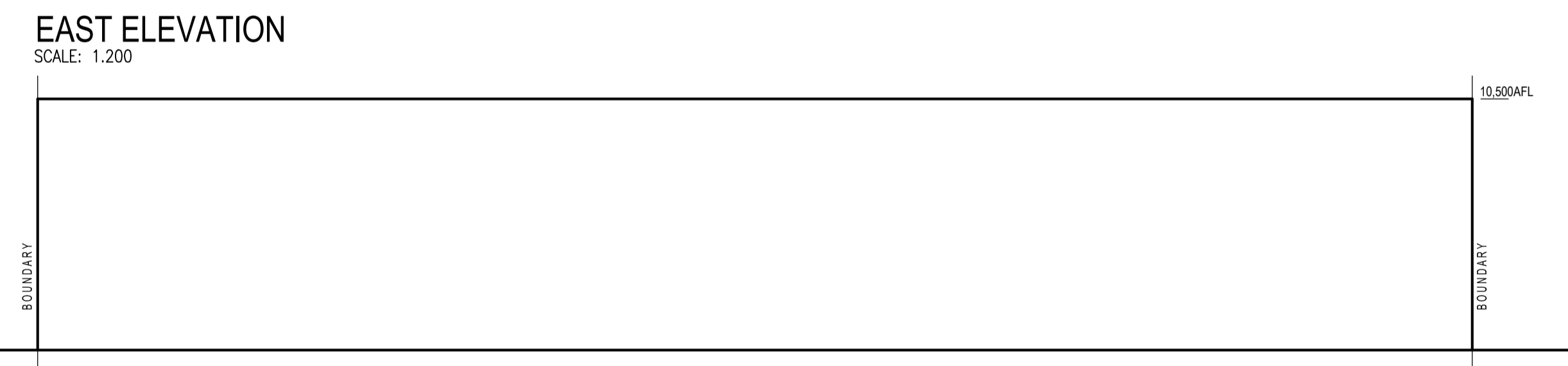
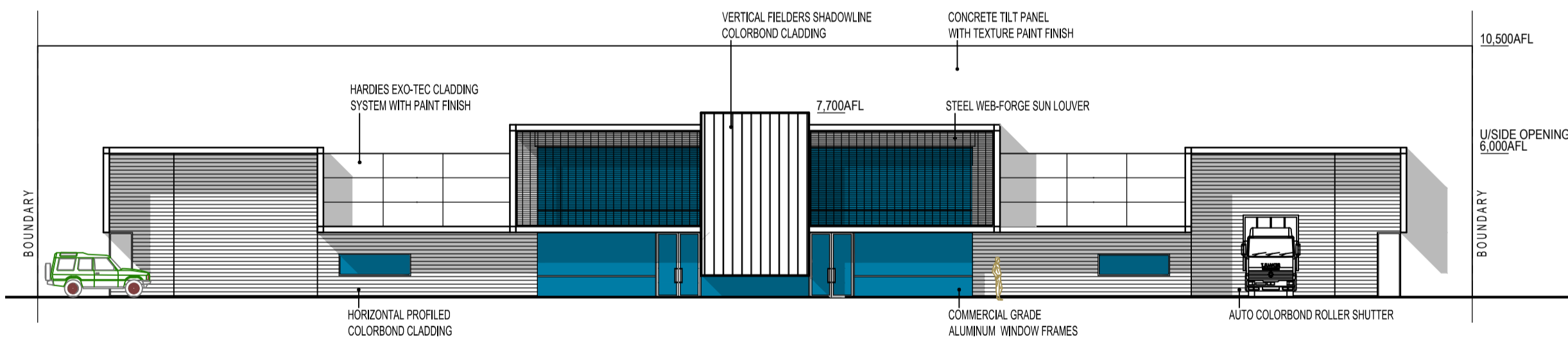
PERSPECTIVE VIEW 1



PERSPECTIVE VIEW 2



PERSPECTIVE VIEW 3



OFFICE - WAREHOUSE DEVELOPMENT  
No 934 & 935 MORDAUNT CIRCUIT, CANNING VALE  
for SALTER PTY LTD



DEVELOPMENT APPLICATION 1

© copyright 2012