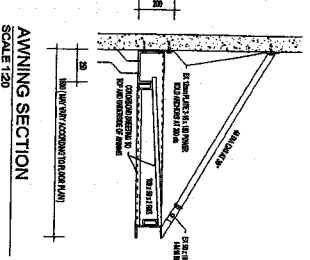
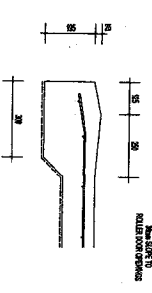
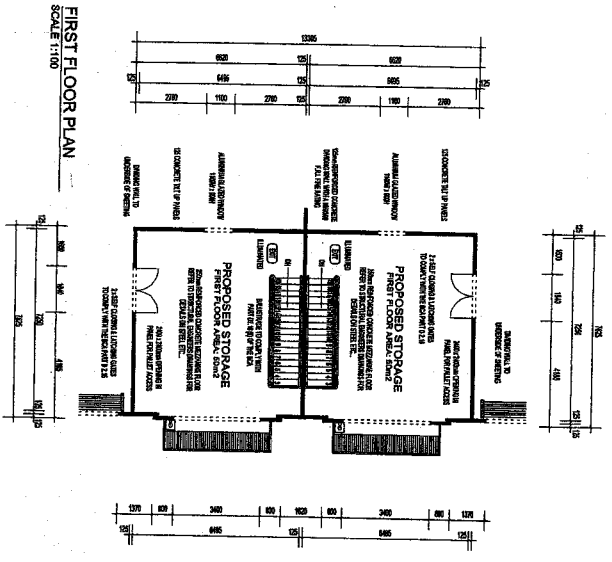
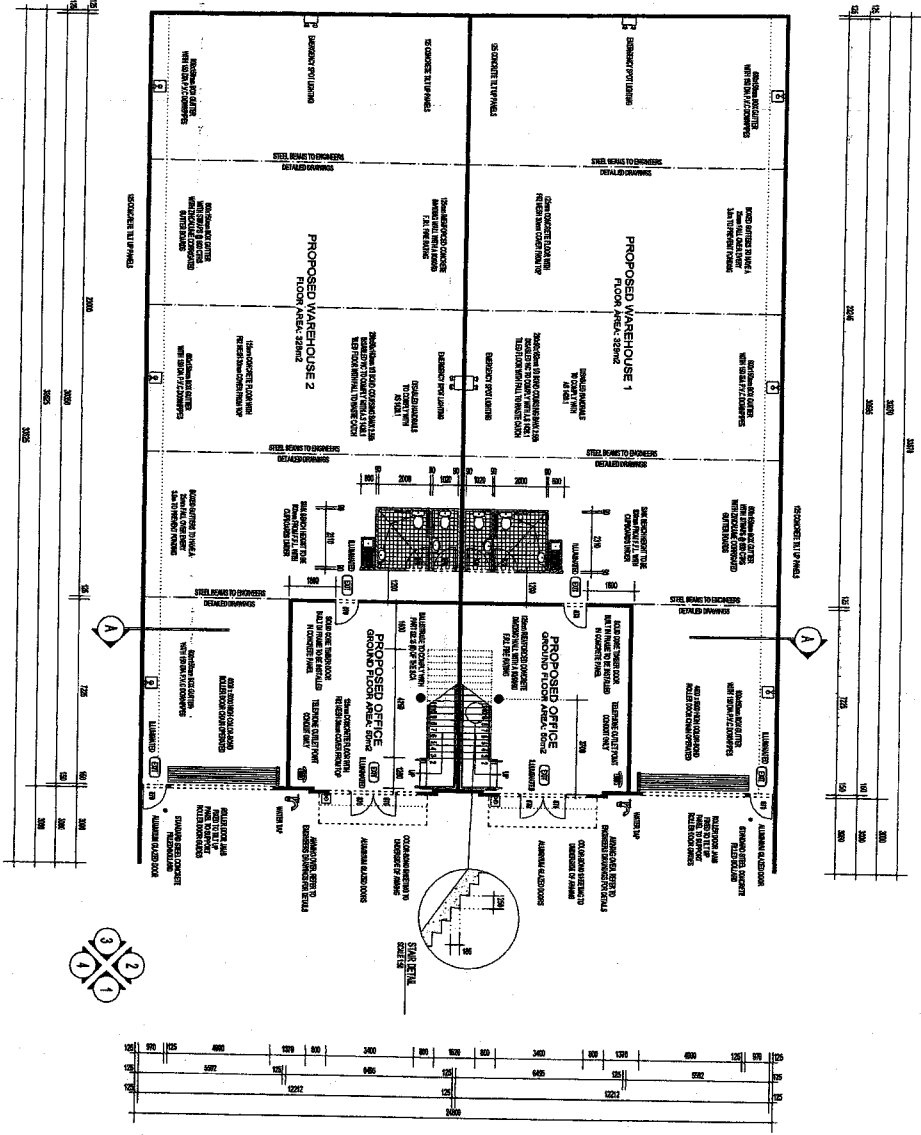


PLANS FOR  
CONSTRUCTION  
3/3/07



NO.	REVISION DESCRIPTION	DATE	BY

1 2 3 4 5 6 7 8 9 10 11 12 13 14

A B C D E F G H I J

TRISPOLIT  
CONSULTANTS LTD  
1000 SHEPPARD AVENUE EAST  
SUITE 1000  
SCARBOROUGH, ONTARIO M1S 1T5  
TEL: (416) 291-1111  
FAX: (416) 291-1112

PROPOSED DEVELOPMENT SITUATED AT: LOT 961 MORDAUNT CIRCUIT CANNING VALE FOR GILIA DEVELOPMENTS

DRAWN: JLM

FLOOR PLAN/S

SCALE 1:100

DATE: 13/02/2007

A02/A



