





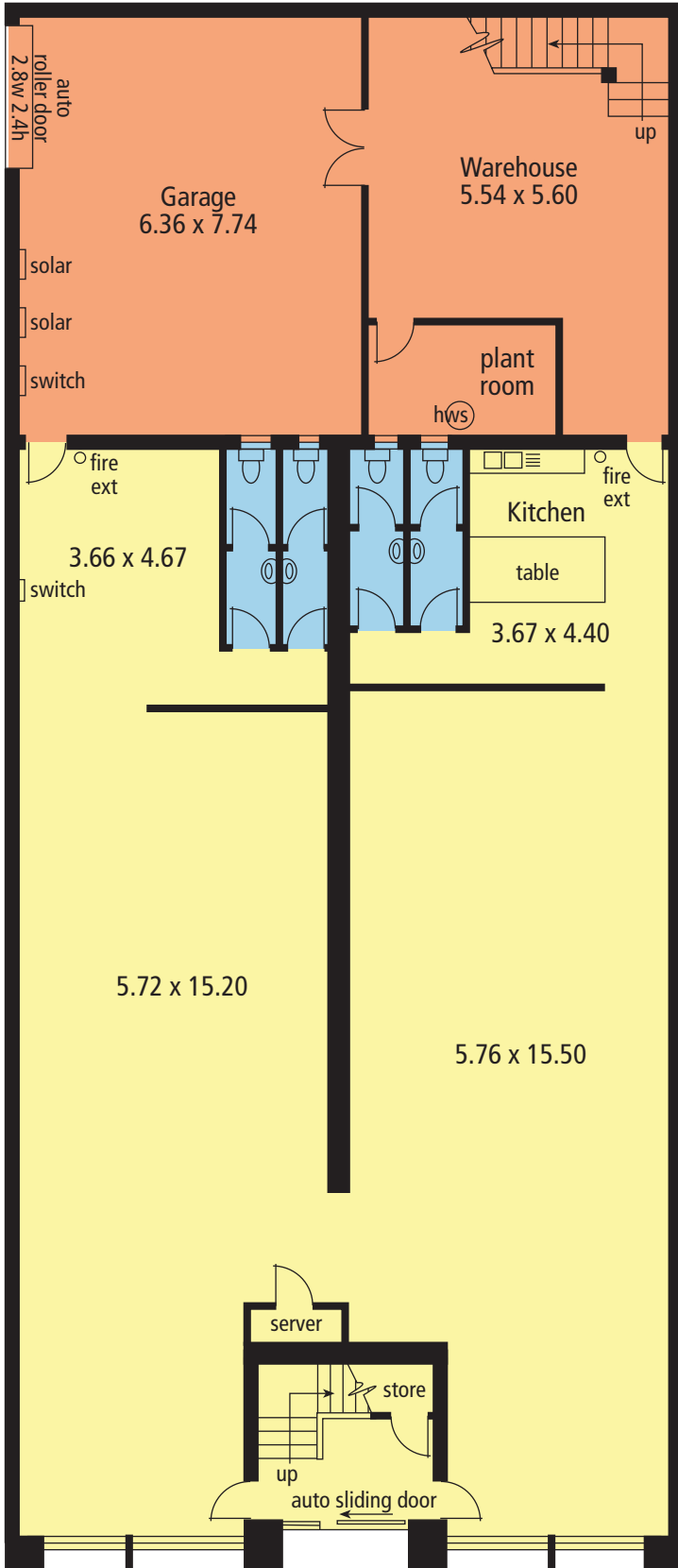
202-204 Halifax Street, Adelaide

ESTIMATED GROSS LETTABLE AREA

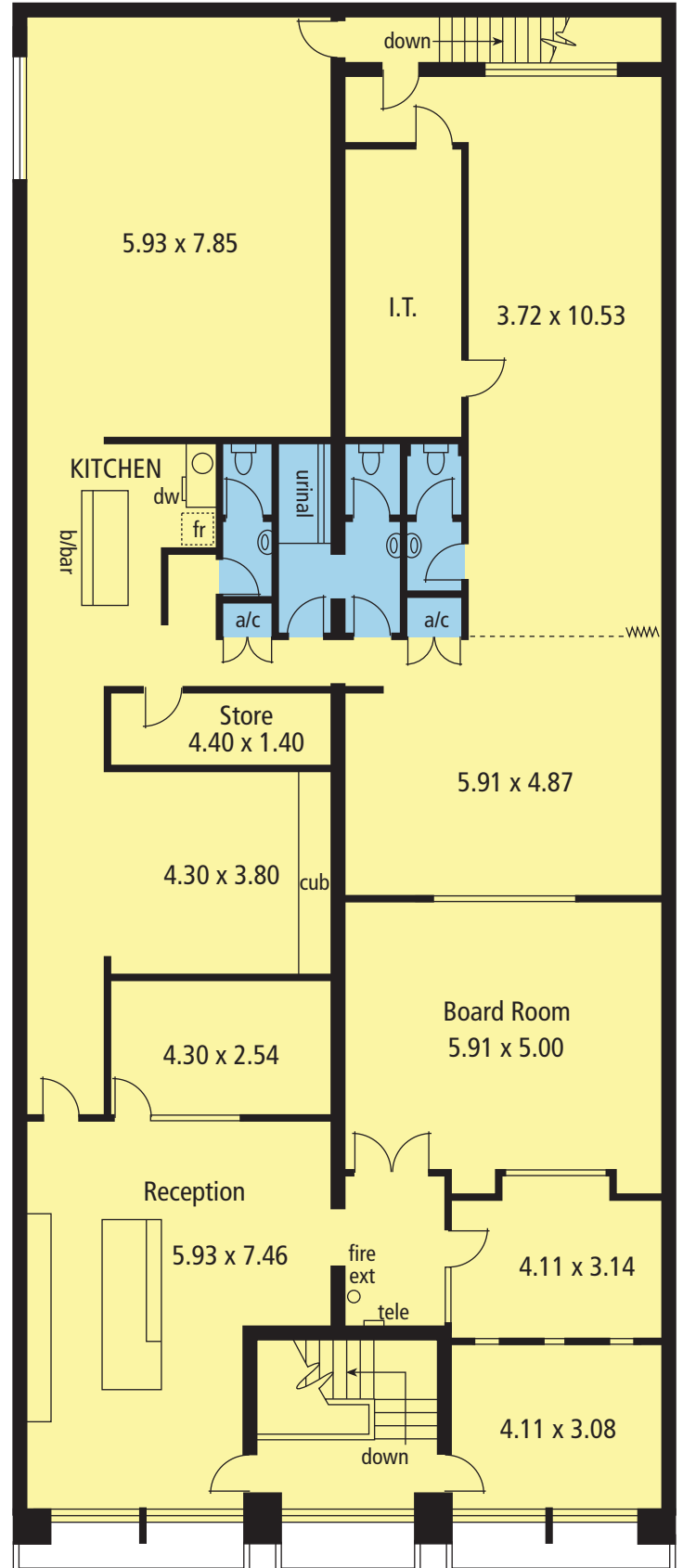
	Ground Floor Office:	229 sq.metres
	First Floor Office:	322 sq.metres
	Garage / Warehouse:	94 sq.metres
	Amenities:	33 sq.metres

TOTAL GROSS LA: 678 sq.metres

Complies with the
PCA Method of Measurement



GROUND FLOOR



FIRST FLOOR